



Welbilt Deutschland GmbH

Talstraße 35
82436 Eglfing
Deutschland

www.convotherm.com

Technical Data

Model	Rated voltage	Frequency	consumption	Rated current
Cmn 10.10 pro	380V - 415V	50/60Hz	9,2kW - 10,9kW	14,0A - 15,2A

articlenumber circuit diagram 5336500-10046_00
articlenumber device

Created on 15.04.2025 CONVOTHERM®
Edit date 28.05.2025 by (short name) ALTENDORF.A

Table of contents

Con_Inhaltsverzeichnis							
structur	&	Page	Page description	Creator	Edited by	Date manually	Date Automatic
higher-order Administrative Documents	&BAA	1	Title page / cover sheet	ALTENDORF.A	ALTENDORF.A		28.05.2025
higher-order Lists (Documents concerning)	&BAB	2	Table of contents : &BAA/1 - ==CS1=LGT+CC1&EFS/1	ALTENDORF.A	ALTENDORF.A		28.05.2025
higher-order Lists (Documents concerning)	&BAB	2.a	Table of contents : ==CS1=CT1+CC1&EFS/1 - ==CS1=CS1+WC1&EFS/2	ALTENDORF.A	ALTENDORF.A		28.05.2025
higher-order Explanatory Documents	&BDB	1	Overview functions	ALTENDORF.A	ALTENDORF.A		28.05.2025
higher-order Explanatory Documents	&BDB	2	Overview locations	ALTENDORF.A	ALTENDORF.A		28.05.2025
higher-order Explanatory Documents	&BDB	3	Overview document types	ALTENDORF.A	ALTENDORF.A		28.05.2025
=PLC +WC1 Combi oven Control Wiring compartment							
Electrical engineering Functional overview documents	&EFA	1	Overview Main board complete	ALTENDORF.A	ALTENDORF.A		28.05.2025
Electrical engineering Functional overview documents	&EFA	2	Overview Main board Network connector	ALTENDORF.A	ALTENDORF.A		28.05.2025
Electrical engineering Functional overview documents	&EFA	3	Overview Expansion board	ALTENDORF.A	ALTENDORF.A		28.05.2025
Electrical engineering Circuit documents	&EFS	1	Wiring overview	ALTENDORF.A	ALTENDORF.A		28.05.2025
=SU1 +MT1 Combi oven Power supply Mounting panel							
Electrical engineering Circuit documents	&EFS	1	Power supply	ALTENDORF.A	ALTENDORF.A		28.05.2025
Electrical engineering Circuit documents	&EFS	2	Power supply	ALTENDORF.A	ALTENDORF.A		28.05.2025
=CV1 +WC1 Combi oven Convection system 1 Wiring compartment							
Electrical engineering Circuit documents	&EFS	1	Hot air Generation 1	ALTENDORF.A	ALTENDORF.A		28.05.2025
=IJ1 +WC1 Combi oven Water injection Wiring compartment							
Electrical engineering Circuit documents	&EFS	1	Sprayer	ALTENDORF.A	ALTENDORF.A		28.05.2025
Electrical engineering Circuit documents	&EFS	2	Sprayer	ALTENDORF.A	ALTENDORF.A		28.05.2025
=MOT +MT1 Combi oven Oven fan Mounting panel							
Electrical engineering Circuit documents	&EFS	1	Motor	ALTENDORF.A	ALTENDORF.A		28.05.2025
=COL +WC1 Combi oven Condenser box Wiring compartment							
Electrical engineering Circuit documents	&EFS	1	Condenser box	ALTENDORF.A	ALTENDORF.A		28.05.2025
=CL1 +WC1 Combi oven Cleaning 1 (Solid to Liquid) Wiring compartment							
Electrical engineering Circuit documents	&EFS	1	Cleaning	ALTENDORF.A	ALTENDORF.A		28.05.2025
=LGT +CC1 Combi oven Oven light Oven cavity							
Electrical engineering Circuit documents	&EFS	1	Lamp	ALTENDORF.A	ALTENDORF.A		28.05.2025

Table of contents

Con_Inhaltsverzeichnis

structur	&	Page	Page description	Creator	Edited by	Date manually	Date Automatic
=CT1 +CC1 Combi oven Core temperature probe Oven cavity							
Electrical engineering Circuit documents	&EFS	1	Sensor (Option)	ALTENDORF.A	ALTENDORF.A		28.05.2025
=COO +WC1 Combi oven Cooling Wiring compartment							
Electrical engineering Circuit documents	&EFS	1	Function	ALTENDORF.A	ALTENDORF.A		28.05.2025
Electrical engineering Circuit documents	&EFS	2	Automatic Automatic machine. Door catch	ALTENDORF.A	ALTENDORF.A		28.05.2025
=HMI +MT1 Combi oven HMI Mounting panel							
Electrical engineering Circuit documents	&EFS	1	Control panel	ALTENDORF.A	ALTENDORF.A		28.05.2025
Electrical engineering Circuit documents	&EFS	2	Control panel	ALTENDORF.A	ALTENDORF.A		28.05.2025
=CS1 +WC1 Combi oven ConvoSense Wiring compartment							
Electrical engineering Circuit documents	&EFS	1	ConvoSense	ALTENDORF.A	ALTENDORF.A		28.05.2025
Electrical engineering Circuit documents	&EFS	2	ConvoSense	ALTENDORF.A	ALTENDORF.A		28.05.2025

Example

+MT1

Description
Standards
EPLAN
Nesting

Mixer 1
City
Installation site
No

+EXT	External Installation site
+MT1	Mounting panel
+WC1	Wiring compartment
+CC1	Oven cavity
+DO1	Unit door

Example

&EFS

&EFS

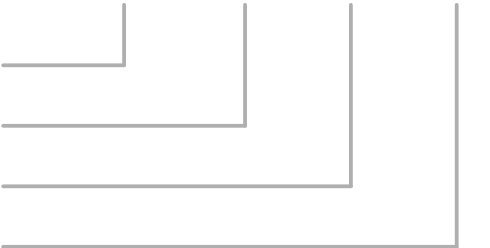
Description
Standard

EPLAN

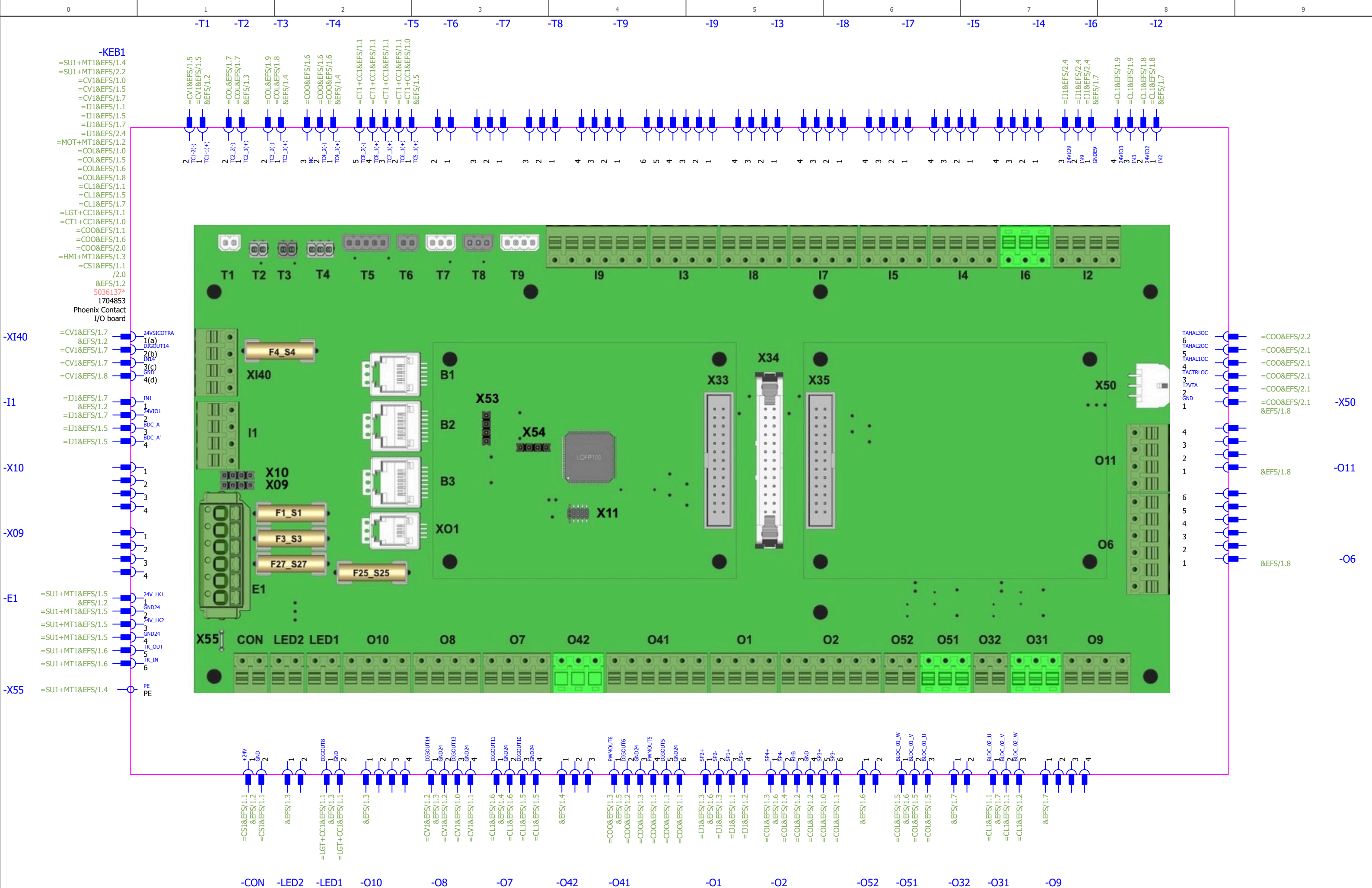
Electrical engineering schematic
**Electrical engineering
Circuit documents**
Schematic multi-line



Document type-Class key (DCC)
Technical Areas A1
Main classes A2
Subclasses A3



&EFA	Electrical engineering Functional overview documents
&EFS	Electrical engineering Circuit documents

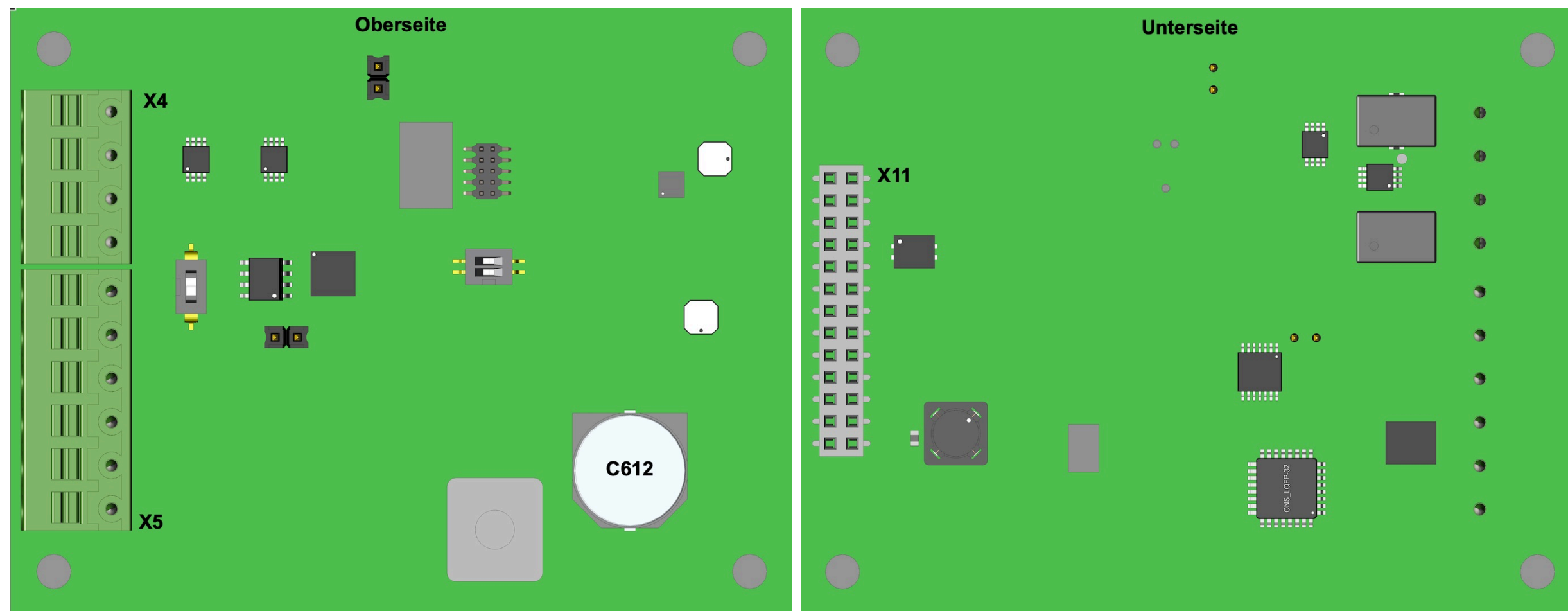
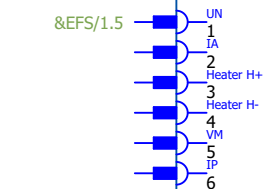
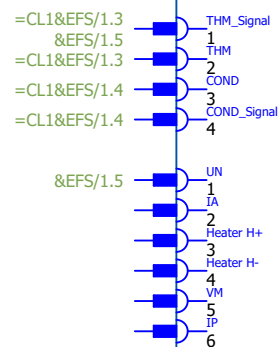


* further articles see Bill of materials

			Date 28.05.2025	Observe protection notices in accordance with ISO 16016	= Control Overview Main board complete	articlenumber circuit diagram		Combi oven		= CS1	PLC
			Ed. ALTENDORF.A			5336500-10046_00		Control		= PLC	
			Appr STENZEL.K					Wiring compartment		+ WC1	
Modification	Date	Name	Original			Project description		Electrical engineering Functional overview documents		& EFA 1 =	

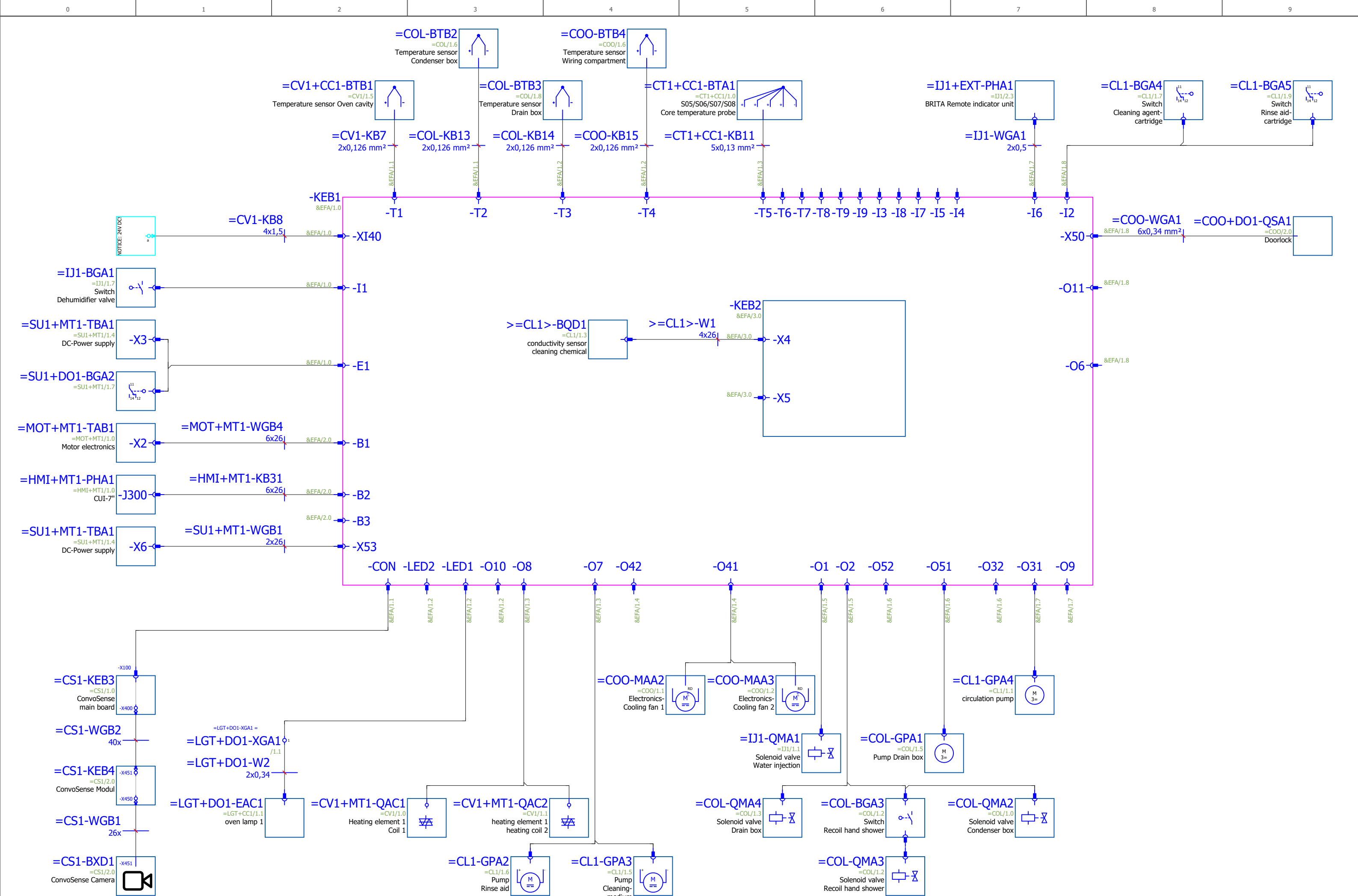


plc

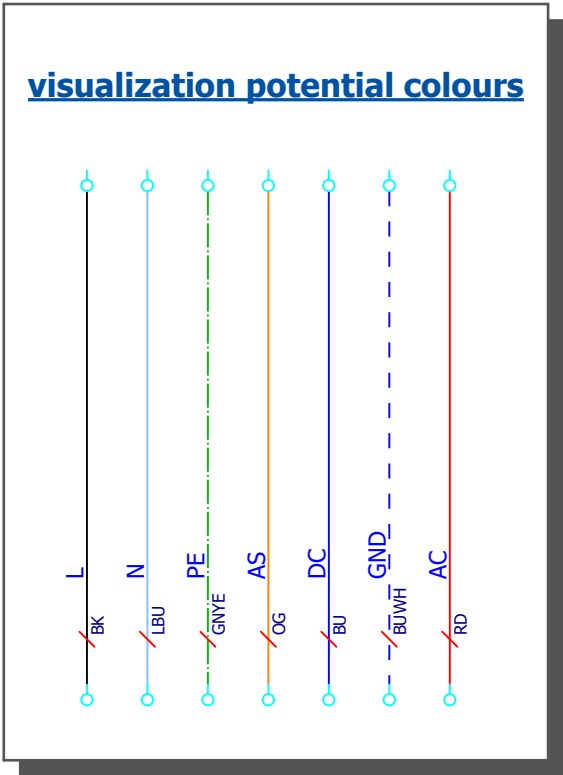


Control
Overview Expansion board

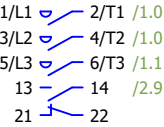
PLC



			Date	28.05.2025	Observe protection notices in accordance with ISO 16016	= Control	articlenumber circuit diagram	Combi oven	== CS1	PLC
			Ed.	ALTENDORF,A		Wiring overview	5336500-10046_00	Control	= PLC	
			Appr	STENZEL,K			articlenumber device	Wiring compartment	+ WC1	
Modification	Date	Name	Original				Project description	Electrical engineering Circuit documents	& EFS	
							17.0	E	1	



			Date	28.05.2025	Observe protection notices in accordance with ISO 16016	= Power supply Power supply	articlenumber circuit diagram 5336500-10046_00	Project description	Combi oven		==	CS1
			Ed.	ALTENDORF.A					Power supply		=	SU1
			Appr	STENZEL.K					Mounting panel		+	MT1
Modification	Date	Name	Original						17.0	E	Electrical engineering Circuit documents	&



			Date	28.05.2025	Observe protection notices in accordance with ISO 16016	= Power supply Power supply	articlenumber circuit diagram 5336500-10046_00	Project description	Combi oven		==	CS1	SU1
			Ed.	ALTENDORF.A					Power supply		=	SU1	
			Appr	STENZEL.K					Mounting panel		+	MT1	
Modification	Date	Name	Original						17.0		E	Electrical engineering Circuit documents	

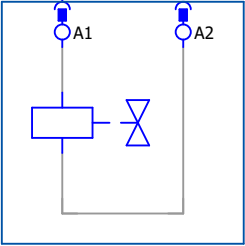


* further articles see Bill of materials

=PLC-KEB1
=PLC&EFA/1.0
5036137*
I/O board

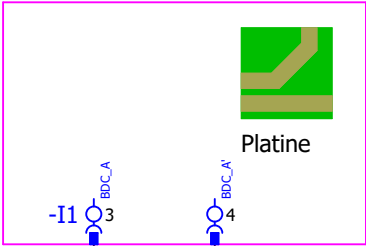


-QMA1
=PLC/1.5
A13
Solenoid valve
Water injection

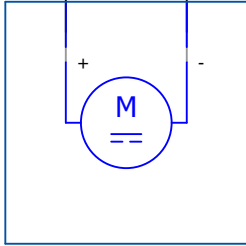


-WZA2
KB21

=PLC-KEB1
=PLC&EFA/1.0
5036137*
I/O board

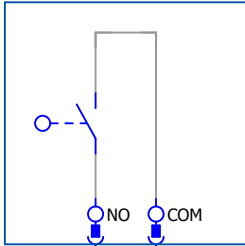


-MAA1
24V DC
A15
Dehumidifier valve

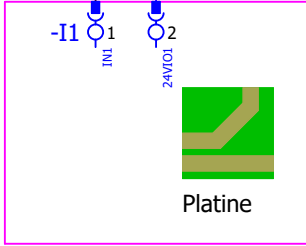


-WZA3
KB23

-BGA1
=PLC/1.0
S23
Switch
Dehumidifier valve



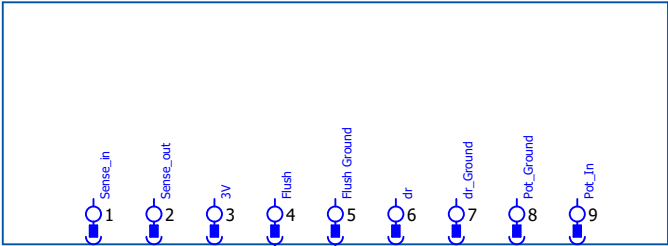
=PLC-KEB1
=PLC&EFA/1.0
5036137*
I/O board



* further articles see Bill of materials

			Date28.05.2025	Observe protection notices in accordance with ISO 16016	= Water injection Sprayer	articlenumber circuit diagram	Combi oven	==CS1	E	17.0	Electrical engineering Circuit documents	&EFS	1	I1
			Ed. ALTENDORF.A			5336500-10046_00		=IJ1						
			Appr STENZEL.K			articlenumber device		+WC1						
Modification	Date	Name	Original			Project description								

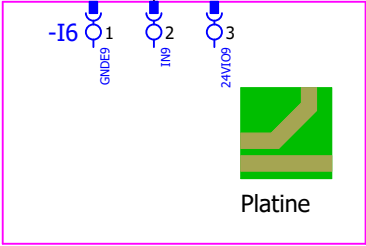
+EXT-PHA1
=PLC/1.7
BRITA Remote indicator unit



-WGA1
2x0,5

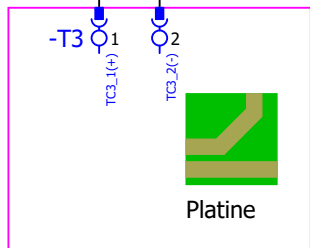
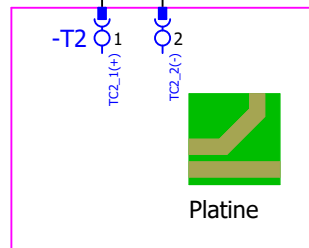
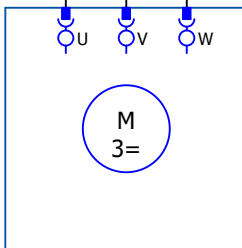
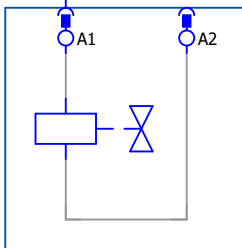
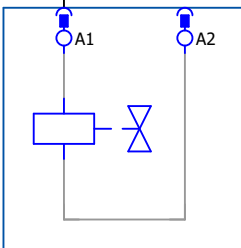
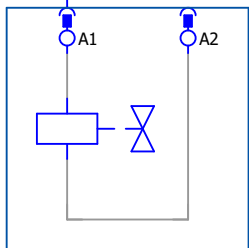
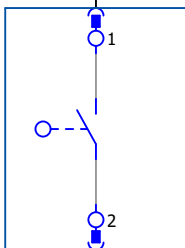
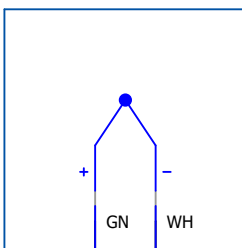
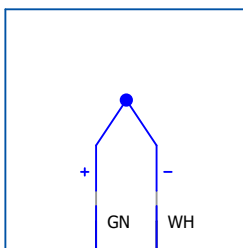
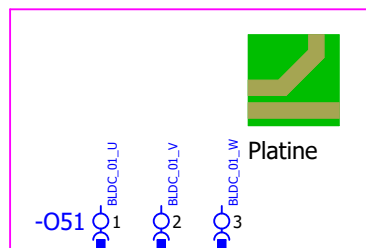
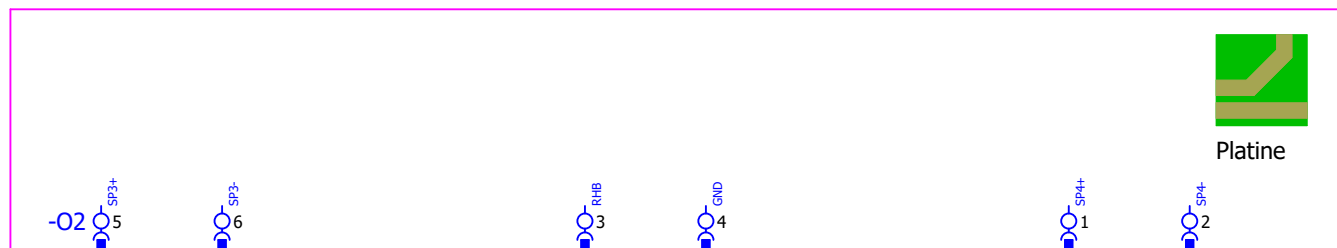
12

=PLC-KEB1
=PLC&EFA/1.0
5036137*
I/O board



Platine

* further articles see Bill of materials



Observe protection notices in accordance with ISO 16016

artikelnúmer	5336500-10046_00
artikelnúmer	

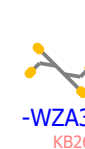
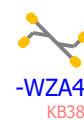
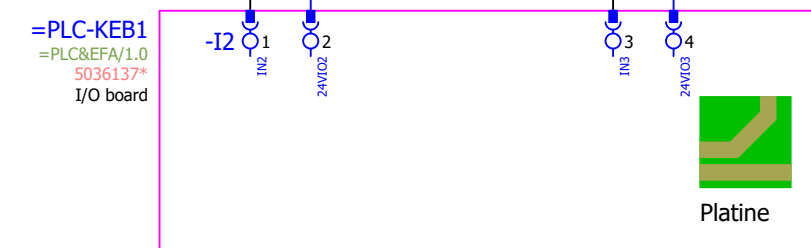
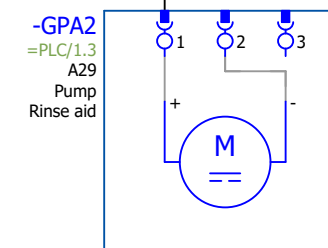
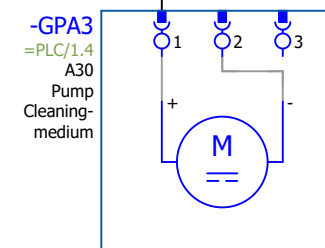
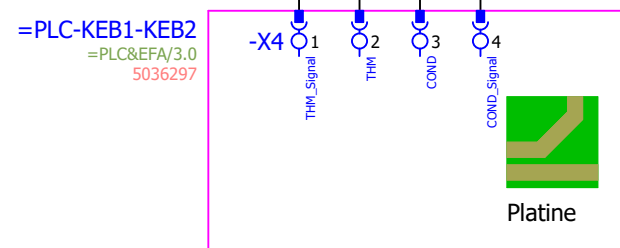
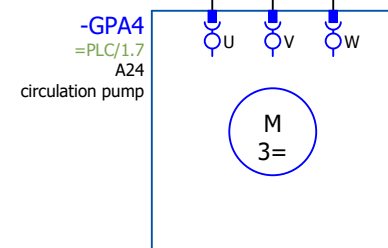
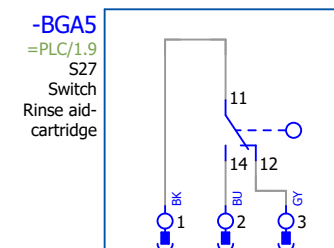
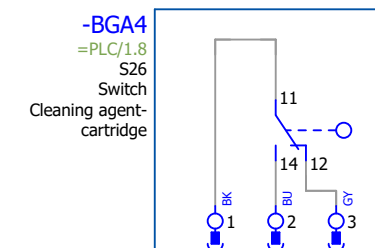
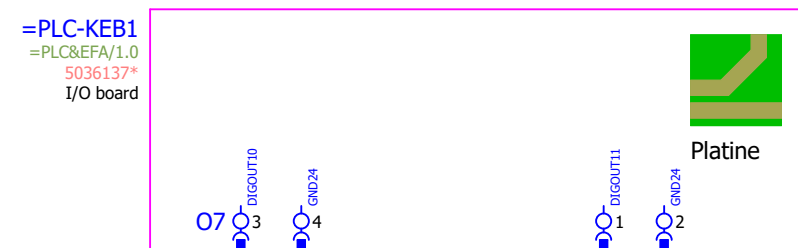
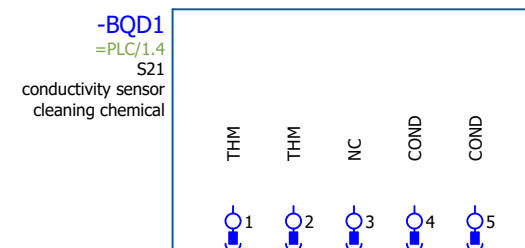
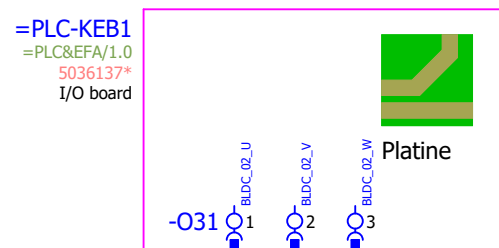
Project description

E

Electrical engineering Circuit documents

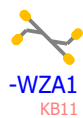
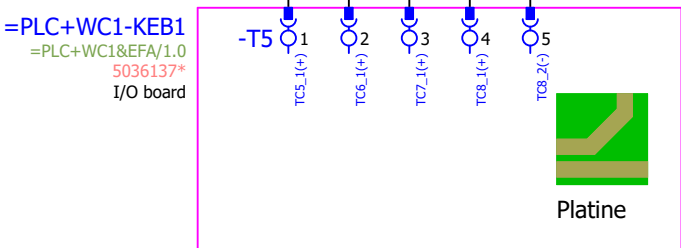
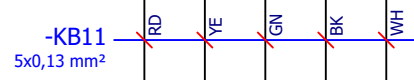
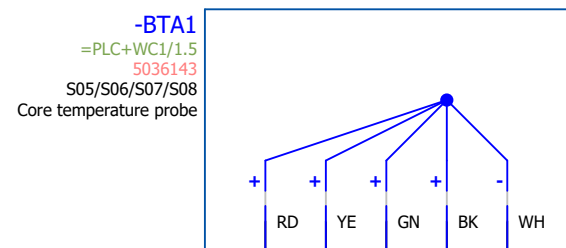
==	CS1
=	COL
+	WC1
&	EFS

col



* further articles see Bill of materials

			Date	28.05.2025	Observe protection notices in accordance with ISO 16016	= Cleaning 1 (Solid to Liquid) Cleaning	articlenumber circuit diagram 5336500-10046_00		Combi oven		== CS1	17
			Ed.	ALTENDORF.A					Cleaning 1 (Solid to Liquid)		= CL1	
			Appr	STENZEL.K					Wiring compartment		+ WC1	
Modification	Date	Name	Original				articlenumber device Project description 17.0		E	Electrical engineering Circuit documents		



* further articles see Bill of materials

			Date	28.05.2025	Observe protection notices in accordance with ISO 16016	= Core temperature probe Sensor (Option)	articlenumber circuit diagram		Combi oven		=	CS1	CT1		
			Ed.	ALTENDORF.A			5336500-10046_00		Core temperature probe		=	CT1			
			Appr	STENZEL.K			articlenumber device		Project description		Oven cavity			+	CC1
Modification	Date	Name	Original				17.0		E	Electrical engineering Circuit documents		&		EFS 1	

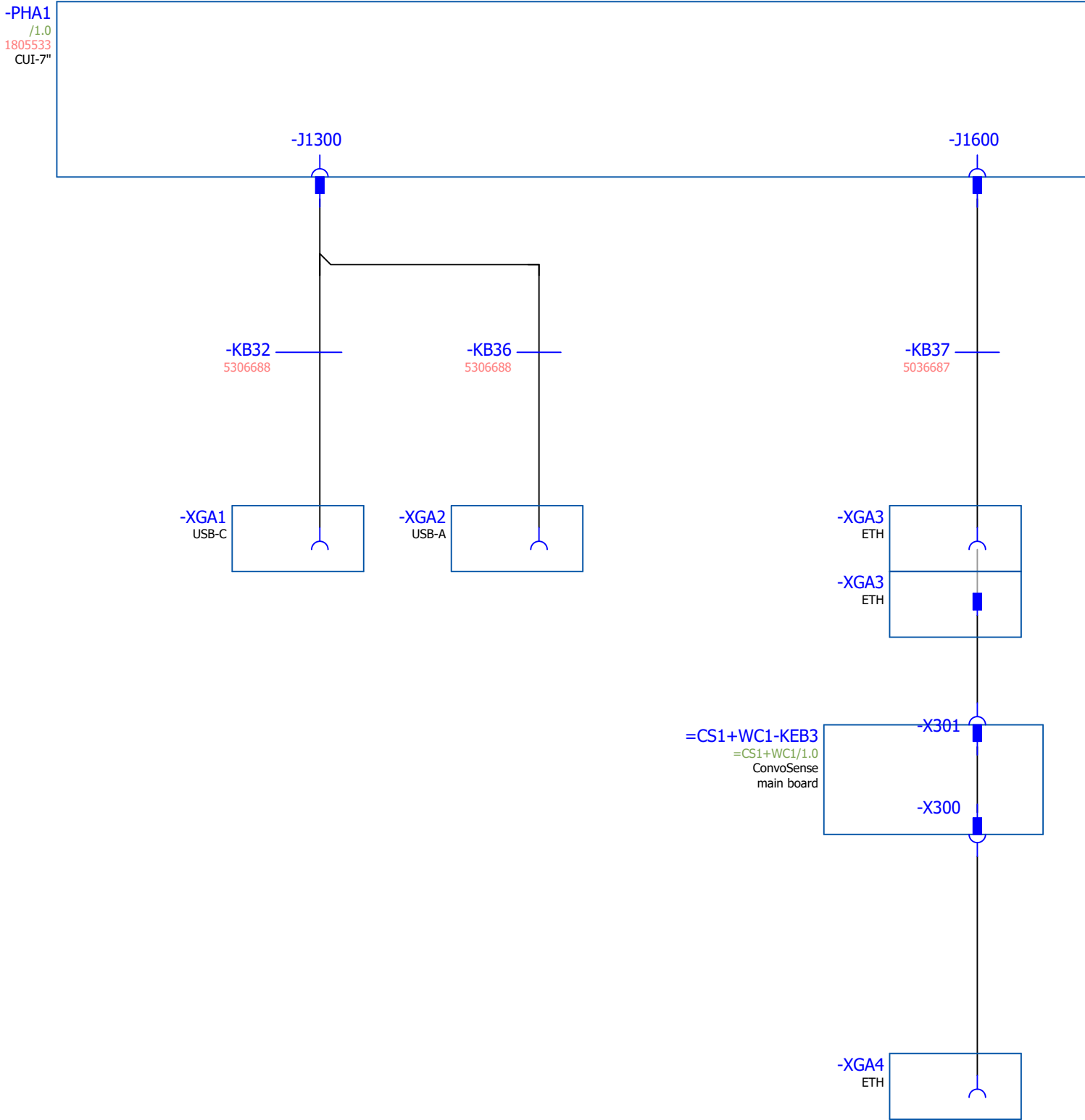


* further articles see Bill of materials

			Date 28.05.2025	Observe protection notices in accordance with ISO 16016	= Cooling Function	artikelnr circuit diagram 5336500-10046_00	Combi oven		==	CS1	COO
			Ed. ALTENDORF.A				Cooling		=	COO	
			Appr STENZEL.K				Wiring compartment		+	WC1	
Modification	Date	Name	Original				artikelnr device Project description 17.0		E	Electrical engineering Circuit documents	

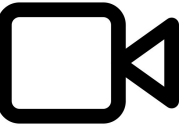


			Date	28.05.2025	Observe protection notices in accordance with ISO 16016	= Cooling Automatic Automatic machine. Door catch	articlenumber circuit diagram		Combi oven		=	CS1	COO	
			Ed.	ALTENDORF.A			5336500-10046_00		Cooling		=	COO		
			Appr	STENZEL.K			articlenumber device		Project description		Wiring compartment			+
Modification	Date	Name	Original				17.0	E	Electrical engineering Circuit documents		&	EFS	2	



* further articles see Bill of materials

			Date28.05.2025	Observe protection notices in accordance with ISO 16016	= HMI Control panel	articlenumber circuit diagram	Combi oven	= = CS1	HMI
			Ed. ALTENDORF.A			5336500-10046_00	HMI	= HMI	
			Appr STENZEL.K			articlenumber device	Mounting panel	+ MT1	
Modification	Date	Name	Original			Project description17.0 E	Electrical engineering Circuit documents	& EFS 2	



CS1

ConvoSense

17.0

Electrical engineering Circuit documents	
--	--

& EFS

CS1

			Date	28.05.2025	Observe protection notices in accordance with ISO 16016	= ConvoSense ConvoSense	artlicunber circuit diagram 5336500-10046_00	Project description	Combi oven		=	CS1	CS1
			Ed.	ALTENDORF.A					ConvoSense		=	CS1	
			Appr	STENZEL.K					Wiring compartment		+	WC1	
Modification	Date	Name	Original						Electrical engineering Circuit documents	&	EFS	2	